



THE ROBERT WEILER COMPANY REALTORS

Serving Central Ohio Since 1938

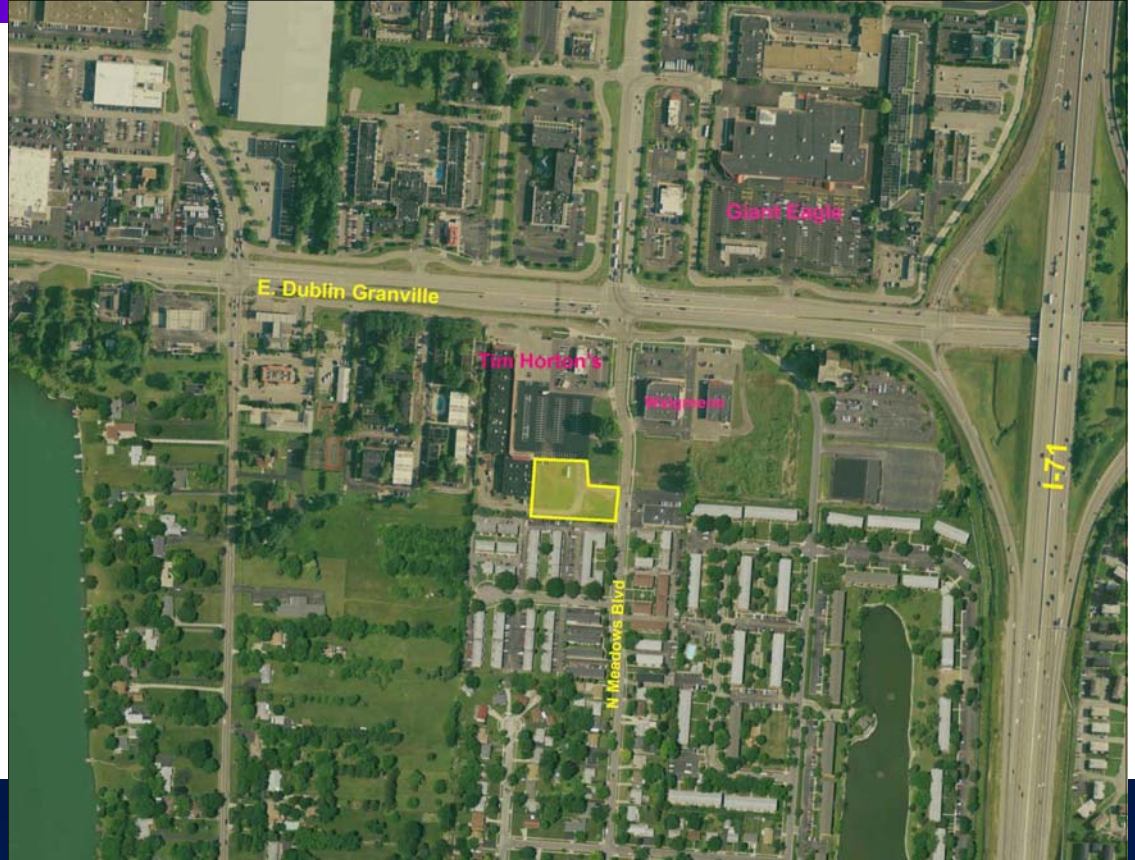
DEVELOPMENT LAND FOR SALE

For more information, contact:

Stephen Tucker
614-221-4286 X107
stucker@rweiler.com

Todd Schiff
614-221-4286 x132
tschiff@rweiler.com

The Robert Weiler
Company
10 N. High Street
Suite 401
Columbus, OH 43215
(614) 221-4286
(614) 221-7069 fax
www.rweiler.com



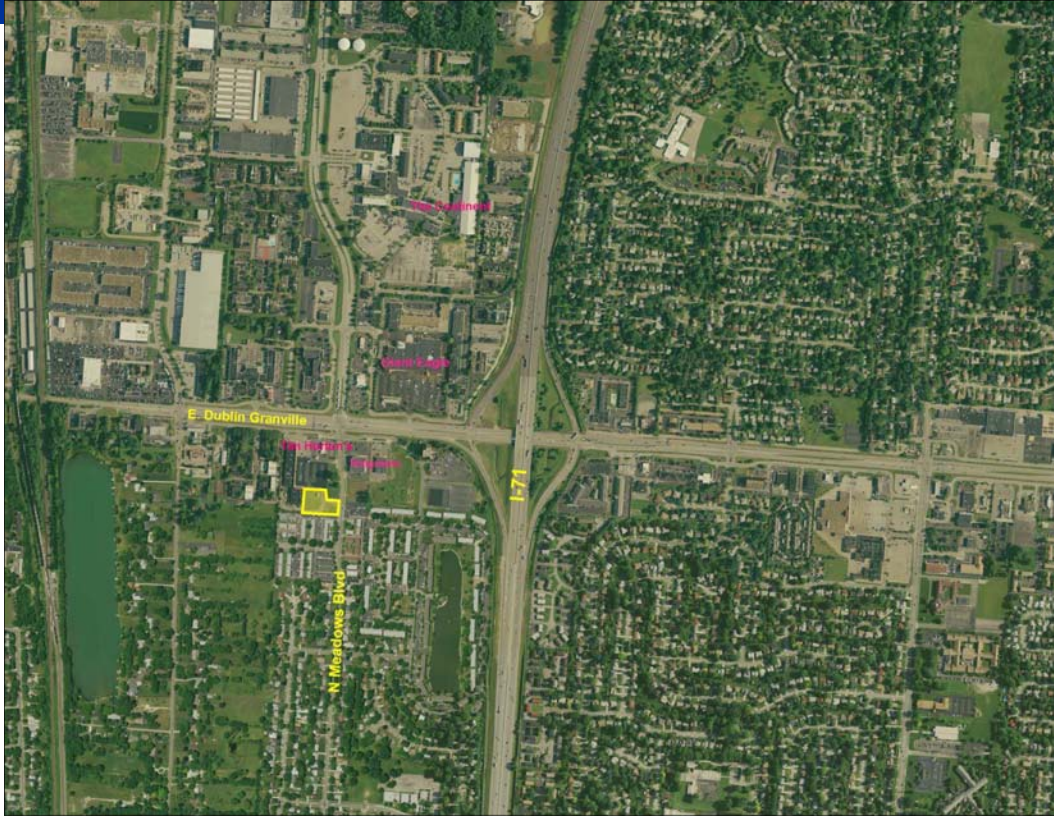
961 E. Dublin-Granville Rd. Columbus, Ohio 43229 Franklin County

- Great frontage along Meadows Blvd.
- Located near Worthington
- Parcel # - 010-212277-00
- 1/2 Mile from The Continent, and many other retail locations.
- Close Proximity to I-71
- All utilities to site
- 1.268+/- acres of land
- Purchase Price: \$249,000
- Great Development Opportunity
- MLS# 2938150

COMMERCIAL BROKERAGE • INVESTMENT COUNSELING • PROPERTY SYNDICATIONS

Information contained herein has been obtained from the property owner or from other sources that we deem reliable. We have no reason to doubt its accuracy, but we do not guarantee it.

961 E. Dublin Granville Rd.
Columbus, Ohio 43229



COMMERCIAL BROKERAGE • INVESTMENT COUNSELING • PROPERTY SYNDICATIONS

Information contained herein has been obtained from the property owner or from other sources that we deem reliable. We have no reason to doubt its accuracy, but we do not guarantee it.